

Tuesday 16th June

Today we will look at a bus timetable, which differs from yesterday as it also includes the return journey timetable. Remember to login to Sumdog to complete challenges too!

Fluent in 5

Remember to think first as to whether you need to use a written method (W), or a mental method (m).

Check your answers, and if you made any mistakes, see if you can work out what you did wrong.

$$A. \frac{2}{5} \text{ of } 90 =$$

$$B. 48.3 \div 100 =$$

$$C. 67 \times 32 =$$

$$D. 80 - 28 =$$

$$E. 12,384 + 15,843 =$$

- Q1** At the start of May, there were 3,043 cans of fizzy orange in the shop. During May,
- 11,392 more cans of fizzy orange were delivered
 - 13,832 cans of fizzy orange were sold.

How many cans of fizzy orange were left in the shop at the end of June?

	cans
--	------

1 mark

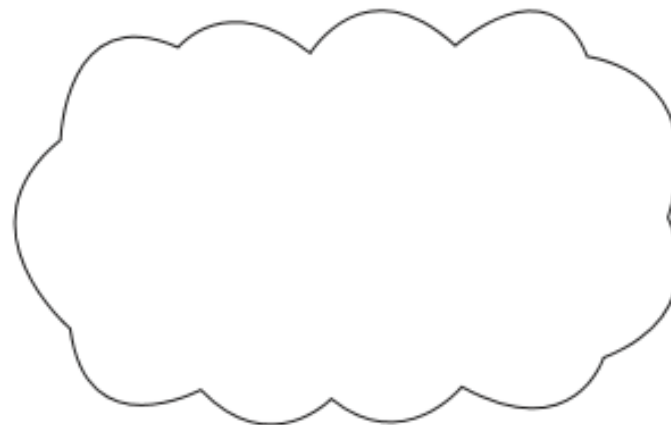
- Q2** Evie eats $\frac{3}{4}$ of a 120g chocolate bar.
Josh eats 70% of a 120g chocolate bar.

Circle the name of the person that eats the most chocolate.

Evie

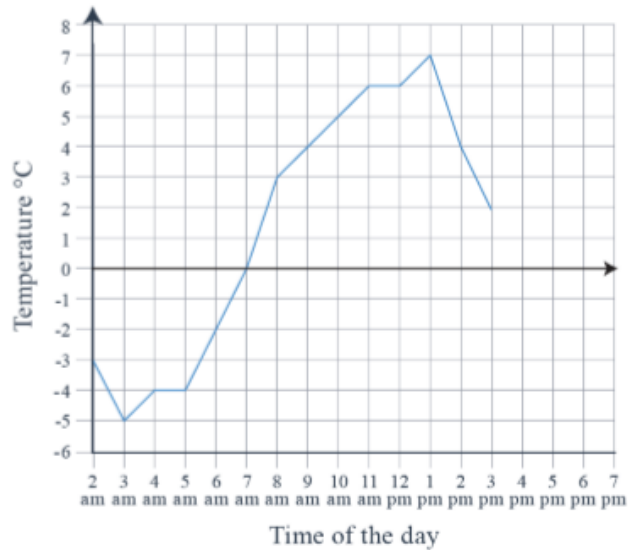
Josh

Explain how you know.



1 mark

Q3 Tallulah records the temperature outside on a cold Saturday in Norwich. She plots her readings on a line graph.



a What is the difference between the highest and lowest temperature?

 °C

1 mark

b At what time(s) was it 4°C?

1 mark

c The temperature decreases by 4°C from 3pm to 6pm.

At what time(s) was it 1°C?

 pm

1 mark

Here is part of a bus timetable. The first column shows the journey in one direction The second column shows the journey in the other direction (the return journey). You will need to think carefully about which you use for each question.

Thurso • Gillock • Wick 83

TUESDAYS AND FRIDAYS ONLY

Service No.	83	83	83
Thurso Lidl	-	1132	1332
Thurso Sir George Street	0936	1138	1338
Springpark Park Avenue	0940	1142	1342
Durran	0954	1156	1356
Gillock	1003	1205	1405
Wick Tesco Store	1017	1219	-
Wick St Fergus Road	1022	1224	-
Wick Retail Park	1027	1229	-

Wick • Gillock • Thurso 83

TUESDAYS AND FRIDAYS ONLY

Service No.	83	83	83
			b
Wick Retail Park	1030	1230	-
Wick St Fergus Road	1035	1235	-
Wick Tesco Store	1040	1240	-
Gillock	1054	1254	1405
Durran	1103	1303	b
Springpark Park Avenue	1117	1317	b
Thurso Sir George Street	1121	1321	1430
Thurso Lidl	1125	1325	-

NO SATURDAY OR SUNDAY SERVICE

- 1) What is the earliest time I can get a bus **to Wick from Gillock**?
- 2) How long will that bus take to get to Wick Retail Park?
- 3) What time will my return bus be if I want to shop for an hour first?
- 4) What time will it reach Gillock?
- 5) I want to get the 12.30 bus from Wick Retail Park to Thurso Lidl. What time will it arrive at Thurso Lidl?
- 6) Write this time in the 12 hour clock.
- 7) How long will the journey take?
- 8) Do we know what time the first bus from Thurso Lidl to Wick leave on a Wednesday? Why?
- 9) What do you think the - mark means?
- 10) If I want to catch the bus from Thurso Lidl and go to Wick Retail Park, can I catch all of the 3 buses?

Answers

$$\text{A. } \frac{2}{5} \text{ of } 90 = 36 \text{ (M)}$$

$$\text{B. } 48.3 \div 100 = 0.483 \text{ (M)}$$

$$\text{C. } 67 \times 32 = 2,144 \text{ (W)}$$

$$\text{D. } 80 - 28 = 52 \text{ (M)}$$

$$\text{E. } 12,384 + 15,843 = 28,227 \text{ (W)}$$

Q1

At the start of May, there were 3,043 cans of fizzy orange in the shop. During May,

- 11,392 more cans of fizzy orange were delivered
- 13,832 cans of fizzy orange were sold.

How many cans of fizzy orange were left in the shop at the end of June?

603 cans

1 mark

Q2

Evie eats $\frac{3}{4}$ of a 120g chocolate bar.

Josh eats 70% of a 120g chocolate bar.

Circle the name of the person that eats the most chocolate.

Evie

Josh

Explain how you know.

$\frac{3}{4}$ is the same as 75%. 75% is larger than 70%

OR

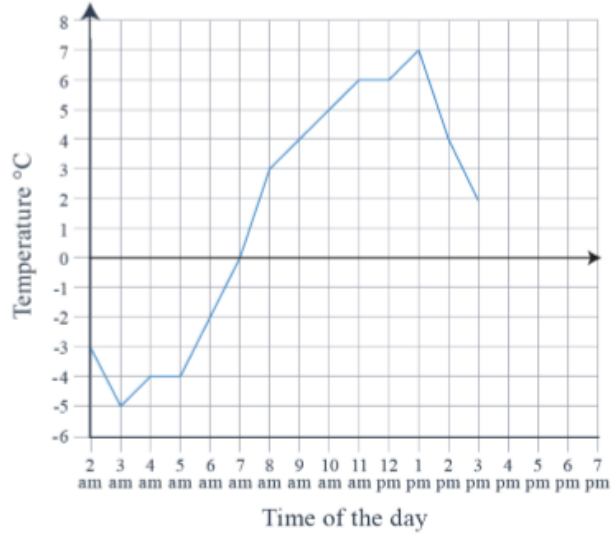
$\frac{3}{4}$ of 120 = 90, 70% of 120 = 84.

1 mark

Q3

Tallulah records the temperature outside on a cold Saturday in Norwich.

She plots her readings on a line graph.



a

What is the difference between the highest and lowest temperature?

12 °C

1 mark

b

At what time(s) was it 4°C?

9am and 2pm

1 mark

c

The temperature decreases by 4°C from 3pm to 6pm.

At what time(s) was it 1°C?

4 pm

1 mark

1) 10.03

2) 24 minutes

3) 12.30

4) 12.54

5) 13.25

6) 1.25pm

7) 55 minutes

8) No, the timetable only shows Tuesdays and Fridays

9) The bus doesn't stop there

10) No, only the 11.32 bus goes all the way from Thurso Lidl to Wick Retail Park.