

Monday 18th May 2020

English – Setting Descriptions

Hello Year 5, Miss Hodgson here! I hope you are all safe and well at home.

Today, we are looking at setting descriptions. If you would like to show us your work, please send it to: WDV.Year5@oasiswoodview.org

Choose a setting from the list below and write expanded noun phrases to describe it.

A desert island

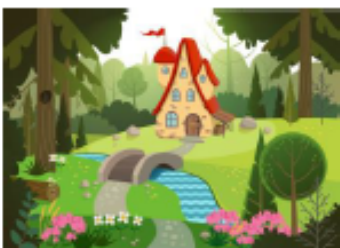
A haunted house

An enchanted forest

An expanded noun phrase is a noun phrase which gives more information about the noun, by using adjectives to describe it. For example: *the magnificent emerald forest with towering trees*. This noun phrase gives more information about the forest.







Extension ideas:

- Now use some or all of your expanded noun phrases to write a story in your setting.
- Make a model of your setting. You could use a shoe box. Include details from your description.
- Draw a picture of your setting. Include the details from your expanded noun phrases above.
- Read out your expanded noun phrases and ask someone else to draw the setting from your description.