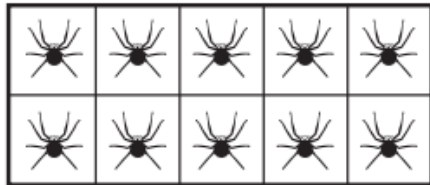


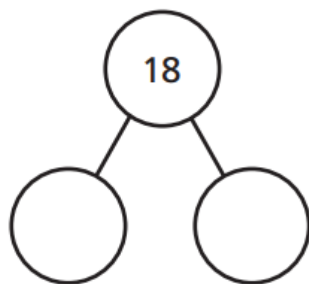
Home Learning: Friday Week 5

Exploring calculation strategies within 20 (Related facts)

I Look at the picture.



Complete the part-whole model and fact family.



$$\square + \square = 18$$

$$\square + \square = 18$$

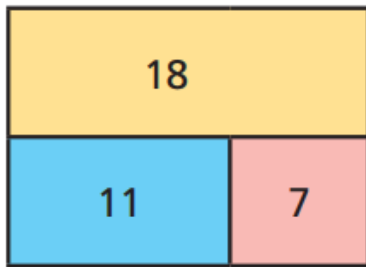
$$18 - \square = \square$$

$$18 - \square = \square$$

Can you write each number sentence a different way?

2 Complete the fact family for each bar model.

a)



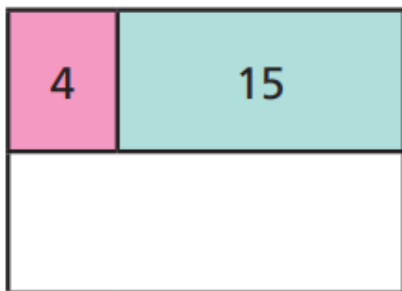
$$\square + \square = \square$$

$$\square + \square = \square$$

$$\square - \square = \square$$

$$\square - \square = \square$$

b)



$$\square = \square + \square$$

$$\square = \square + \square$$

$$\square = \square - \square$$

$$\square = \square - \square$$